

Internet Broadcast with an Edje 2000 encoder

** The edje encoder can encode at data rates from less than one Mbit up to 8 Mbits. Most broadband services will accommodate streams of 1.5 Mbits or less. If the bitrate is set too high, it could potentially block Internet access to PC's that share a connection with a decoder unit. It is best to double-check the true speed of your connection first in order to determine a compatible bitrate.*

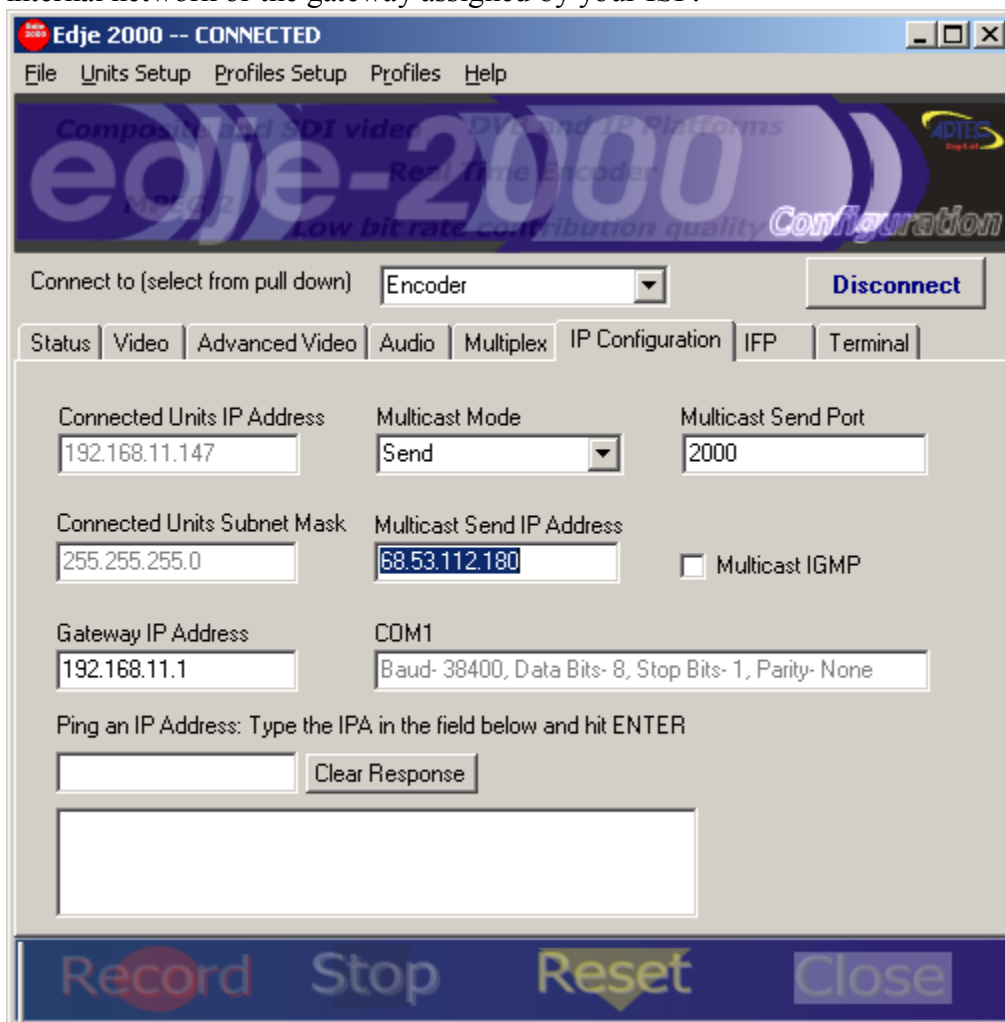
Configure the encoder to broadcast to an external IP using the Edje 2000 software.

At the IP Configuration tab, set the Multicast Mode to Send.

Set the external IP of the receiving decoder in the 'Multicast Send IP Address' field. (See Decoder section below for details regarding IP assignment.)

The Multicast Send Port is 2000 by default. This port can be changed to any port, but must be matched by the receive port of the decoder.

The Gateway IP Address value should be the same as the gateway IP used on your internal network or the gateway assigned by your ISP.



The screenshot shows the Edje 2000 software interface. The title bar reads "Edje 2000 -- CONNECTED". The menu bar includes "File", "Units Setup", "Profiles Setup", "Profiles", and "Help". The main window has a blue header with the text "edge-2000 Configuration" and "ADTES Digital". Below the header, there is a "Connect to (select from pull down)" dropdown menu set to "Encoder" and a "Disconnect" button. The interface is divided into several tabs: "Status", "Video", "Advanced Video", "Audio", "Multiplex", "IP Configuration" (which is selected), "IFP", and "Terminal". The "IP Configuration" tab contains the following fields and controls:

- Connected Units IP Address: 192.168.11.147
- Multicast Mode: Send
- Multicast Send Port: 2000
- Connected Units Subnet Mask: 255.255.255.0
- Multicast Send IP Address: 68.53.112.180
- Multicast IGMP
- Gateway IP Address: 192.168.11.1
- COM1: Baud- 38400, Data Bits- 8, Stop Bits- 1, Parity- None

At the bottom of the window, there is a "Ping an IP Address: Type the IPA in the field below and hit ENTER" section with an input field, a "Clear Response" button, and a large empty text area. The bottom bar contains four buttons: "Record", "Stop", "Reset", and "Close".

Internet Broadcast with an Edje 2000 encoder

Configure the decoder unit to receive the Internet stream.

At the IP Configuration tab, set the Multicast Mode to Receive.

Set the receive IP of the decoder to 224.0.1.250. This value will always be the same.

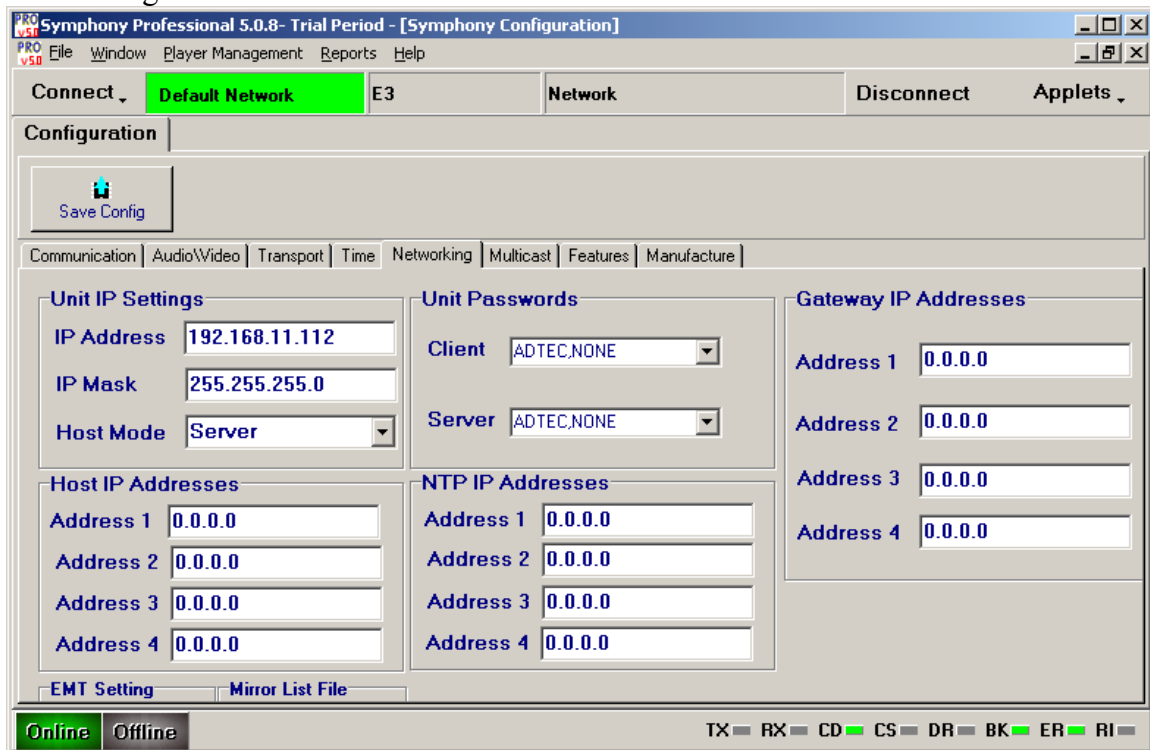
Set the receive port to match the value set on the encoder unit.

If you know of an external IP that is available, enter that value for the IP Address. Otherwise, from the Terminal tab, type 'DHCP On' to allow your DHCP server to assign an IP for you. This is also the IP value that will be used for the Multicast Send IP on the encoder.

The Gateway IP Address should be configured here based on the gateway of your local network or the assigned gateway from your ISP.

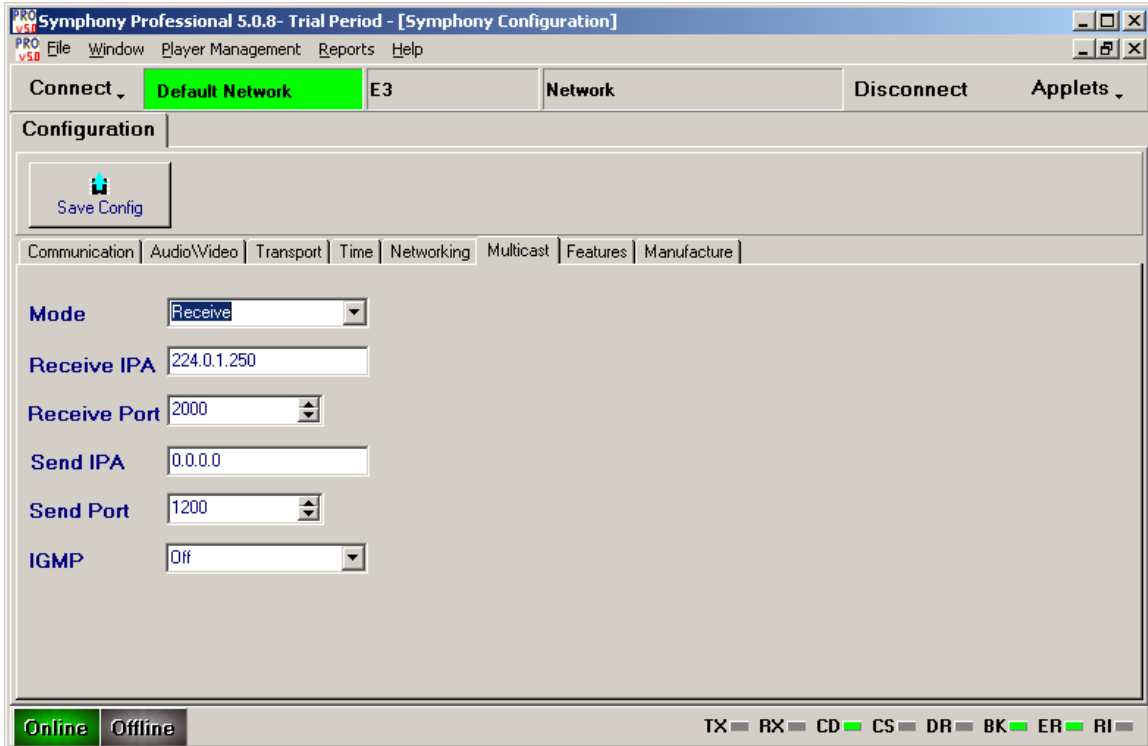
The decoder setup can also be accomplished using the Symphony application.

From the Configuration applet, the IP and Gateway values can be set from the Networking tab.



Internet Broadcast with an Edje 2000 encoder

The Multicast Receive Mode, Receive IP, and Receive port are set from the Multicast tab.



Once setup is finished, the encoder must be started. This is accomplished by clicking 'Record' from the Status tab in the edge 2000 software. This where current status of a stream is viewed, as well as information such as stream type, audio and video properties, and encode time.

Internet Broadcast with an Edje 2000 encoder

