

Network Configuration over an Ethernet Connection (Out of the Box)

Your new Adtec unit comes with an Ethernet adapter installed and configured with a specific IP address. This allows you to connect to your unit over the Ethernet directly out of the box.

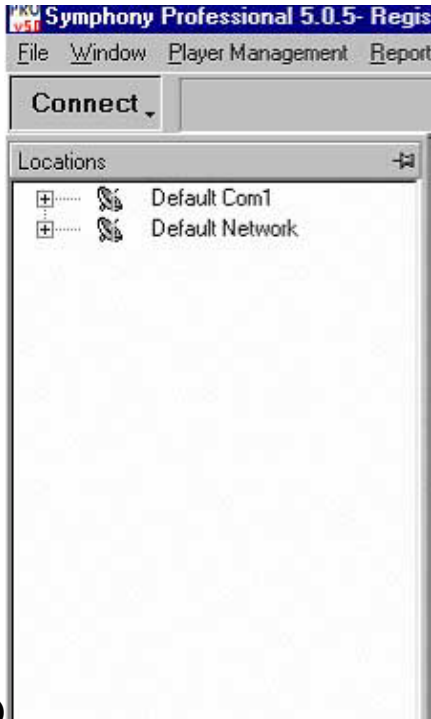
Due to the architecture of IP based networking, it is recommended that you consult a PC or network administrator for help with the physical connections and PC setup. Specifically, your PC will need to be configured with an IP address within the 192.168.10.XXX range or configured in a fashion that would allow a connection to be made to 192.168.10.48, the factory default IP address. This connection can be made through Adtec Symphony Pro, Adtec model specific software (i.e. Edje2000 or DVBridge) or Telnet. Since all Adtec equipment is defaulted to the same IP address, you should only connect one unit to the network at a time. Otherwise, there will be conflicts. After you change the IP addresses, as explained later, you may connect any number of units to the network.

Factory default network settings are as follows;

Username = ADTEC
Password = NONE
IP Address = 192.168.10.48
Subnet Mask = 255.255.255.0

Initial Connection Using Symphony Pro

- After installing the Symphony Pro software, click on CONNECT. Then choose “Default Network” (Fig 1). The menu bar will have a box which turns green when connected, yellow when connecting and red when disconnected. If you are not connected, consult your network admin. Most likely, there is either a cabling or PC configuration issue.
- Once connected, you may change the configuration of the unit by selecting Applets > Setup > Configuration from the drop-down menu on the right (Fig 2). These tabs should automatically fill with the current settings of the unit.
- After making the necessary changes to all tabs, you must click on SAVE CONFIG for the changes to take affect.



(Fig 1)



(Fig 2)

Configuring Network Settings

To change the network properties of your Adtec unit, go to the NETWORKING tab. Here you will note all the typical networking attributes plus a few extras (Fig 3). Usually, only Unit IP Addresses and Gateway IP Addresses are changed for average networking. Consult the application specific documentation for those uses.

- **IP Address** – Adjust to the desired unit IP.
- **IP Mask** – Adjust to the desired Subnet Mask (Typically 255.255.255.0)
- **Host Mode** – Application specific. Typically this should be set to SERVER.
- **Host IP Addresses** – Up to four FTP servers may be selected. Only add these if using the Mirror feature for pulling files from an FTP server.
- **EMT Setting** – Application specific. Electronic Multicast Transfer is used for “mirroring” images to/from another Adtec unit.
- **Mirror List File** – Application specific. Filename used for listing files that need to be transferred automatically via FTP.
- **Unit Passwords** – Login used to connect to each Adtec unit. User adjustable but not recommended.
- **NTP IP Addresses** – Up to four NTP servers may be selected for continuous internal clock updating.
- **Gateway IP Addresses** – Used for connecting through a bridged network. Up to four gateway IP addresses may be selected.

After adjusting the network settings and saving the configuration to your unit, you must add a LOCATION in order to re-connect. (See the LOCATIONS section of the Help menu.)